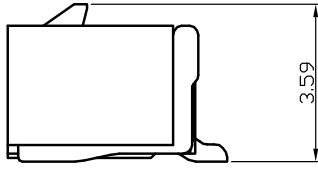
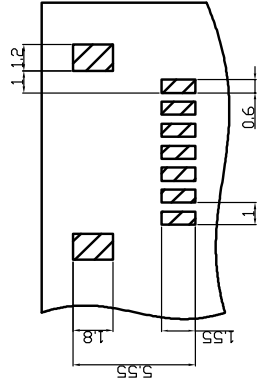
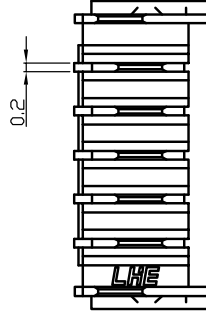
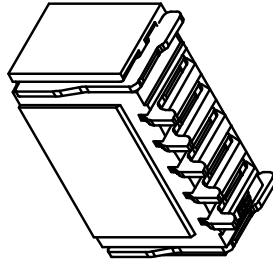
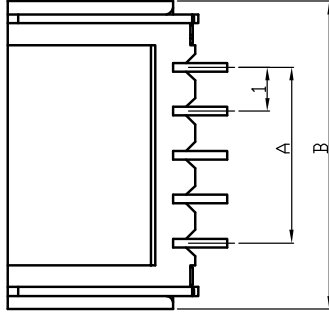
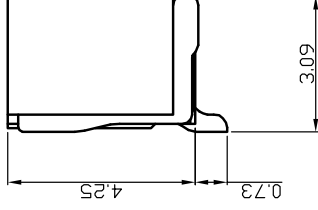


# SH1.0型连接器承认图面

SHB1.0-AWB



SH1.0-AWB



P. C. B LAYOUT

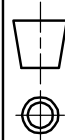
Poles	Part No.		Dimensions mm	
	A	B	A	B
2	A1001-SR02	SH1.0-2AWB	1.00	4.00
3	A1001-SR03	SH1.0-3AWB	2.00	5.00
4	A1001-SR04	SH1.0-4AWB	3.00	6.00
5	A1001-SR05	SH1.0-5AWB	4.00	7.00
6	A1001-SR06	SH1.0-6AWB	5.00	8.00
7	A1001-SR07	SH1.0-7AWB	6.00	9.00
8	A1001-SR08	SH1.0-8AWB	7.00	10.00
9	A1001-SR09	SH1.0-9AWB	8.00	11.00
10	A1001-SR10	SH1.0-10AWB	9.00	12.00
---	---	---	---	---
30	A1001-SR30	SH1.0-30AWB	29.00	32.00
2	A1001-SRB02	SHB1.0-2AWB	1.00	4.00
3	A1001-SRB03	SHB1.0-3AWB	2.00	5.00
4	A1001-SRB04	SHB1.0-4AWB	3.00	6.00
5	A1001-SRB05	SHB1.0-5AWB	4.00	7.00
6	A1001-SRB06	SHB1.0-6AWB	5.00	8.00
7	A1001-SRB07	SHB1.0-7AWB	6.00	9.00
8	A1001-SRB08	SHB1.0-8AWB	7.00	10.00
9	A1001-SRB09	SHB1.0-9AWB	8.00	11.00
10	A1001-SRB10	SHB1.0-10AWB	9.00	12.00
---	---	---	---	---
30	A1001-SRB30	SHB1.0-30AWB	29.00	32.00

REV	DESCRIPTION	DATE
A/0	原始版本	E
A/1	修订版本	

3	Soldering lug 焊片	Phosphor Bronze Tin 磷青铜镀锡	2	
2	Pin 插针	Phosphor Bronze Tin 磷青铜镀锡	N	
1	Housing 基座	LCP (UL94V-0)	1	
序号	图号	材料	数量	附注
				本色 (Normal)

未注公差		比例		SIZE		页码	
X.° ±3°	X. X.° ±0.5°	单位	比例	Design Units	SIZE	页码	Part No
>0-3	>3-18	>18-50		MM Only	METRIC	A4	
±0.12	±0.15	±0.3					
制作	审核	批准	图号	材料	图号	图号	图号
			见图解	品名	品名	品名	品名
							SH1.0-AWB

**LHE** 浙江联和电子有限公司  
ZHEJIANG LIANHE ELECTRONICS CO., LTD



1 2 3 4 5 6 7 8 9 10 11 12 13 14 15